



## LGT3001. Threaded rod punctual anchor for light cladding.

It is a punctual anchoring system, made of stainless steel A2/A4 threaded rod and platen, of varying sizes.

Anchor for pasted and/or grooved light cladding.

Recommended for any kind of wall, the connection is made by resin or cement mortar.

Simple and efficient installation.

Valid for any kind of facade configuration, it can be completely hidden or seen.

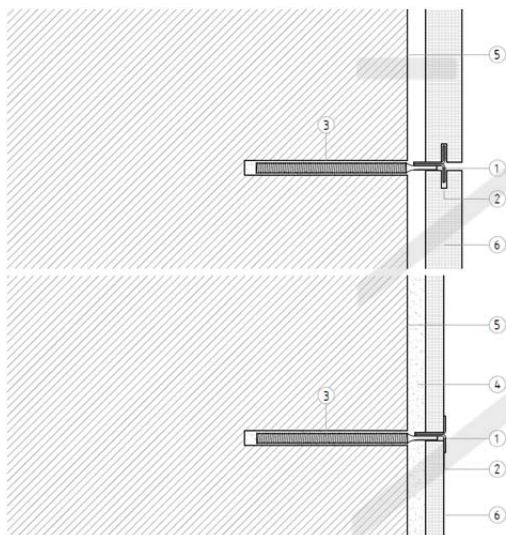
The following table indicates the load values for the most requested products of the series.

For any question please contact our technical department in [letstalk@perfilstoneinnova.com](mailto:letstalk@perfilstoneinnova.com)

Allowables load values (kN) according to anchor dimensions and position.

DIAMETER(mm)	LENGTH(mm)	EMBEDMENT(mm)	OVERHANG(mm)	LOAD (kN)
8	100	70	30	0,38
8	120	70	50	0,22
8	150	80	70	0,16
10	100	70	30	0,81
10	120	70	50	0,49
10	150	80	70	0,35

REF: LGT3001



Load values are in kN for maximum deformation of 1,4 mm.

These values relate exclusively to the flexural strength of this system made of stainless steel A2/A4.

The values assume a correct fixation of the system to the wall, so it must be the right for each system. However, it is recommended a test on site.

Both manufacturing and testing are carried out according UNE 41957/1:2000

1. Threaded rod punctual anchor for light cladding
2. Connection element for grooved stone or seen
3. Resin/mortar
4. Adhesive cement
5. Wall
6. Cladding