



PF2105. Stainless steel anchor for light cladding.

It is a profiles system, made of aluminum 6063 / T5, which connecting element with the cladding is a punctual anchor, made of stainless steel, for light cladding.

Recommended for any kind of support, it helps to solve irregularities on it.

Anchor for light claddings as porcelain, fibre cements, resins, etc

Each anchor can support up to four pieces.

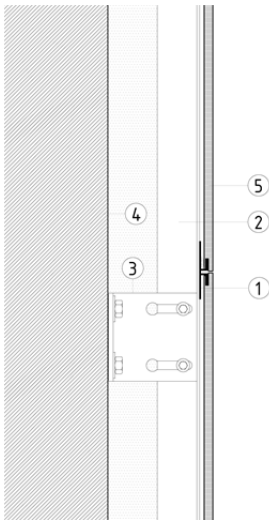
For horizontal joints, the system is completely hidden.

Recommended for facade configurations with continuous joints.

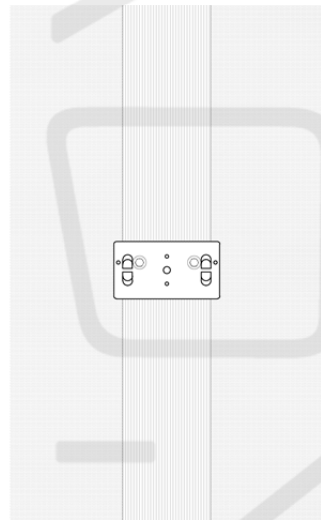
The following table indicates the load values for the most requested products of the series.

For any question please contact our technical department in

letstalk@perfilstoneinnova.com



1. Anchor for light cladding
2. Vertical profile
3. Bracket
4. Wall
5. Cladding



H = vertical separation between brackets
a = vertical separation between anchors
b = horizontal separation between vertical profiles

Allowables wind load values ($q_s = \text{kN/m}^2$) according to dimensions.

H (cm)	b	a				
		80	90	100	110	120
150	80	0.74	0.66	0.59	0.54	0.49
	70	0.97	0.87	0.78	0.71	0.65
	60	0.83	0.73	0.66	0.60	0.55
	50	0.66	0.58	0.53	0.48	0.44
	40	0.72	0.64	0.57	0.52	0.48
140	80	1.04	0.92	0.83	0.76	0.69
	70	0.82	0.73	0.65	0.60	0.55
	60	1.11	0.98	0.88	0.80	0.74
	50	0.88	0.78	0.70	0.64	0.59
	40	0.96	0.85	0.76	0.69	0.64
130	80	1.38	1.22	1.10	1.00	0.92
	70	1.16	1.03	0.92	0.84	0.77
	60	1.48	1.32	1.19	1.08	0.99
	50	1.21	1.07	0.97	0.88	0.81
	40	1.29	1.15	1.03	0.94	0.86
120	80	1.81	1.61	1.45	1.31	1.20
	70	1.52	1.35	1.22	1.11	1.01
	60	1.30	1.16	1.04	0.95	0.87
	50	1.70	1.51	1.36	1.24	1.13
	40	1.28	1.14	1.03	0.93	0.86
110	80	2.54	2.26	2.03	1.84	1.69
	70	2.00	1.78	1.61	1.46	1.34
	60	1.70	1.51	1.36	1.23	1.13
	50	2.42	2.15	1.94	1.76	1.61
	40	1.85	1.64	1.48	1.34	1.23
100	80	4.02	3.57	3.21	2.92	2.68
	70	2.84	2.52	2.27	2.06	1.89
	60	2.25	2.00	1.81	1.64	1.50
	50	1.93	1.72	1.55	1.40	1.29
	40	2.52	2.24	2.02	1.83	1.68

Load values are in kN for maximum deformation of 1,4 mm.

These values relate exclusively to the flexural strength of the mixed system made of aluminum 6063/T5 and stainless steel A2/A4.

The values assume a correct fixation of the system to the wall, so it must be the right for each system. However, it is recommended a test on site.

Both manufacturing and testing are carried out according UNE 41957/1:2000