

PF2103. Adjustable stainless steel anchor.

It is a profiles system, made of aluminum 6063 / T5, which connecting element with the cladding is an adjustable anchor, made of stainless steel.

Recommended for any kind of support, it helps to solve irregularities on it.

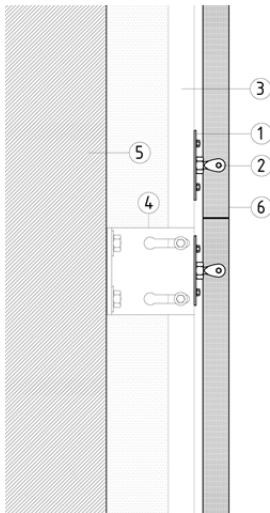
Adjustable in all three axes

For both horizontal and vertical joints, the system is completely hidden.

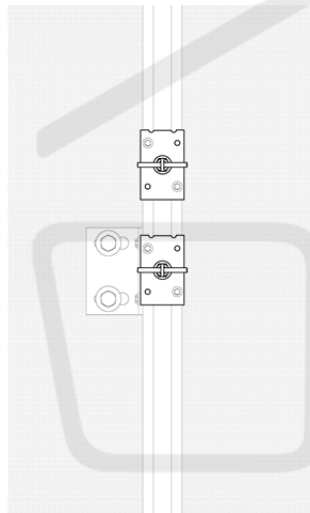
Recommended for facade configurations with continuous or offset joint patterns.

The following table indicates the load values for the most requested products of the series.

For any question please contact our technical department in letstalk@perfilstoneinnova.com



1. Adjustable anchor
2. Adjustable element
3. Vertical profile
4. Bracket
5. Wall
6. Cladding



- H = vertical separation between brackets
a = vertical separation between anchors
b = horizontal separation between vertical profiles

Allowables wind load values ($q_s = \text{kN/m}^2$) according to dimensions.

H (cm)	a	b				
		80	90	100	110	120
150	80	0.55	0.49	0.44	0.40	0.37
	70	0.72	0.64	0.58	0.53	0.48
	60	0.61	0.55	0.49	0.45	0.41
	50	0.49	0.43	0.39	0.35	0.32
	40	0.53	0.47	0.43	0.39	0.35
140	80	0.77	0.69	0.62	0.56	0.51
	70	0.61	0.54	0.49	0.44	0.40
	60	0.82	0.73	0.66	0.60	0.55
	50	0.65	0.58	0.52	0.47	0.44
	40	0.71	0.63	0.57	0.52	0.47
130	80	1.15	1.02	0.92	0.84	0.77
	70	0.86	0.76	0.69	0.62	0.57
	60	1.10	0.98	0.88	0.80	0.73
	50	0.89	0.80	0.72	0.65	0.60
	40	0.96	0.85	0.77	0.70	0.64
120	80	1.86	1.65	1.49	1.35	1.24
	70	1.28	1.14	1.03	0.93	0.85
	60	0.96	0.86	0.77	0.70	0.64
	50	1.26	1.12	1.00	0.92	0.84
	40	0.95	0.85	0.76	0.69	0.64
110	80	3.03	2.69	2.42	2.20	2.02
	70	2.08	1.85	1.66	1.51	1.39
	60	1.45	1.29	1.16	1.05	0.96
	50	1.79	1.59	1.44	1.30	1.19
	40	1.37	1.22	1.10	1.00	0.92
100	80	3.33	2.96	2.67	2.42	2.22
	70	3.33	2.96	2.67	2.42	2.22
	60	2.37	2.10	1.89	1.72	1.58
	50	1.66	1.48	1.33	1.21	1.11
	40	2.07	1.84	1.65	1.50	1.38

Load values are in kN for maximum deformation of 1,4 mm.

These values relate exclusively to the flexural strength of the mixed system made of aluminum 6063/T5 and stainless steel A2/A4

The values assume a correct fixation of the system to the wall, so it must be the right for each system. However, it is recommended a test on site.

Both manufacturing and testing are carried out according UNE 41957/1:2000