



PUN1006. Tube punctual anchor.

It is a punctual anchoring system made of stainless steel tube in A2 or A4 quality, 10mm in diameter and 1mm thick. Recommended for any kind of wall, the connection is made by resin or cement mortar.

Simple and efficient installation.

Valid for any kind of facade configuration, it is completely hidden.

Highly recommended for light cladding, both horizontal and vertical joint.

The following table indicates the load values for the most requested products of the series.

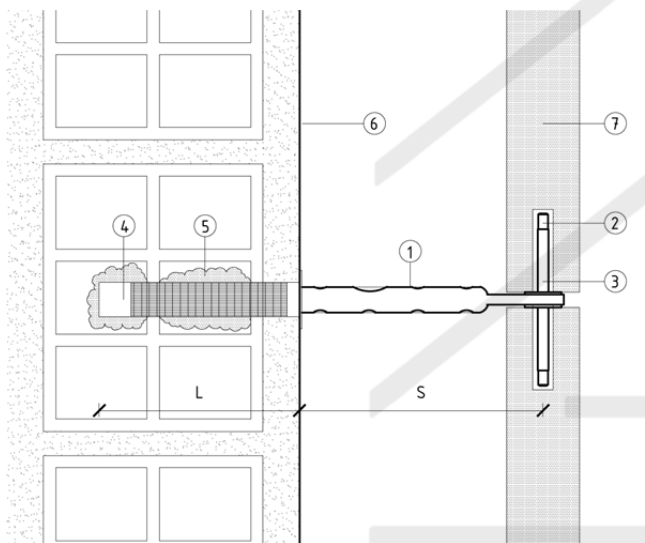
For any question please contact our technical department in

letstalk@perfilstoneinnova.com

Allowables load values (kN) according to anchor dimensions and position.

DIAMETER(mm)	LENGTH(mm)	EMBEDMENT(mm)	OVERHANG(mm)	LOAD (kN)
10	120	80	40	0,38
10	150	80	70	0,22
10	180	80	100	0,16
10	200	80	120	0,13

REF: PUN1006



Load values are in kN for maximum deformation of 1,4 mm.

These values relate exclusively to the flexural strength of this system made of stainless steel A2/A4.

The values assume a correct fixation of the system to the wall, so it must be the right for each system. However, it is recommended a test on site.

Both manufacturing and testing are carried out according UNE 41957/1:2000

1. Tube punctual anchor
2. Pin
3. Nylon bushing
4. Nylon sieve
5. Resin/mortar
6. Wall
7. Cladding