

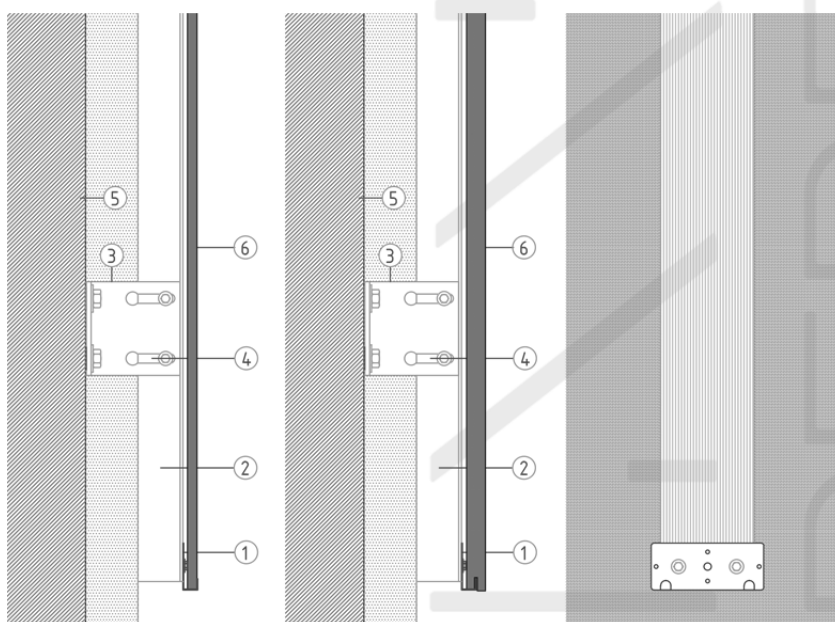
LGT3004. Anchor for light cladding.

It is an anchoring system for profiles, made of stainless steel A4, and 1 mm thickness.
 Recommended for any kind of support, the connection is made with self-drilling screw to the profile.
 Simple and efficient installation.
 Anchor for light claddings with ventilated chamber.
 For all kind of light cladding as porcelain, fibre cements, resins, etc.
 For horizontal joints. The system can be hidden or visible and each anchor can support up to 2 pieces.
 The following table indicates the load values for the available products of the series.
 For any question please contact our technical department in letstalk@perfilstoneinnova.com

Allowables load values (kN) according to anchor dimensions.

DIMENSIONS(mm)	CLADDING THICKNESS (mm)		LOAD (kN)
	HIDDEN	VISIBLE	
50x120x8,5x10x1	10	5	0,08
60x71x14x10x1	20	10	0,05

REF: LGT3004



Load values are in kN for maximum deformation of 1,4 mm.

These values relate exclusively to the flexural strength of this system made of stainless steel A4.

The values assume a correct fixation of the system to the wall, so it must be the right for each system.

However, it is recommended a test on site.

Both manufacturing and testing are carried out according UNE 41957/1:2000

1. Anchor for light cladding
2. Vertical profile
3. Bracket
4. Regulation
5. Wall
6. Cladding