



LGT3002. Rebar punctual anchor for light cladding.

It is a punctual anchoring system, made of stainless steel A2/A4 rebar and platen, of varying sizes
Anchor for pasted and/or grooved light cladding.

Recommended for any kind of wall, the connection is made by resin or cement mortar.

Simple and efficient installation.

Valid for any kind of facade configuration, it can be completely hidden or seen.

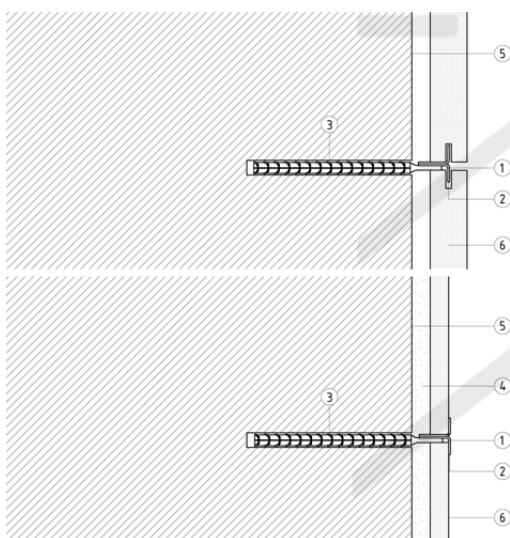
The following table indicates the load values for the most requested products of the series.

For any question please contact our technical department in letstalk@perfilstoneinnova.com

Allowables load values (kN) according to anchor dimensions and position.

| DIAMETER(mm) | LENGTH(mm) | EMBEDMENT(mm) | OVERHANG(mm) | LOAD (kN) |
|--------------|------------|---------------|--------------|-----------|
| 6 | 100 | 70 | 30 | 0,25 |
| 6 | 120 | 70 | 50 | 0,15 |
| 6 | 150 | 80 | 70 | 0,10 |
| 8 | 100 | 70 | 30 | 0,55 |
| 8 | 120 | 70 | 50 | 0,35 |
| 8 | 150 | 80 | 70 | 0,25 |

REF: LGT3002



Load values are in kN for maximum deformation of 1,4 mm.

These values relate exclusively to the flexural strength of this system made of stainless steel A2/A4.

The values assume a correct fixation of the system to the wall, so it must be the right for each system. However, it is recommended a test on site.

Both manufacturing and testing are carried out according UNE 41957/1:2000

1. Rebar punctual anchor for light cladding
2. Connection element for grooved stone or seen
3. Resin/mortar
4. Adhesive cement
5. Wall
6. Cladding