



## LGT3006. Anchor for light cladding.

It is a punctual anchoring system, made of stainless steel A4, and 1 mm thickness.

Recommended for any kind of support, the connection is made with screw and nylon plug.

Simple and efficient installation.

Anchor for light claddings as porcelain, fibre cements, resins, etc

For horizontal joints. The system can be hidden or visible.

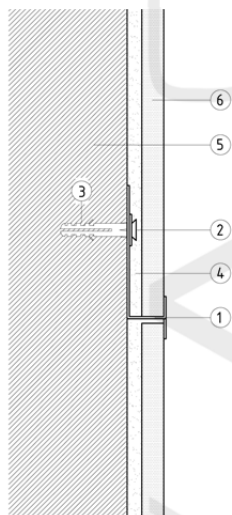
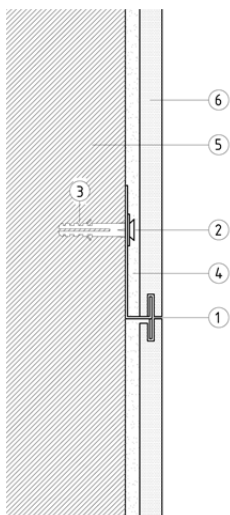
The following table indicates the load values for the available products of the series.

For any question please contact our technical department in [letstalk@perfilstoneinnova.com](mailto:letstalk@perfilstoneinnova.com)

Allowables load values (kN) according to anchor dimensions.

| DIMENSIONS(mm) | CLADDING THICKNESS (mm) |         | LOAD (kN) |
|----------------|-------------------------|---------|-----------|
|                | HIDDEN                  | VISIBLE |           |
| 33x12x20x1     | 20                      | 10      | 0,12      |
| 35x17x20x1     | 30                      | 15      | 0,08      |

REF: LGT3006



Load values are in kN for maximum deformation of 1,4 mm.

These values relate exclusively to the flexural strength of this system made of stainless steel A4.

The values assume a correct fixation of the system to the wall, so it must be the right for each system. However, it is recommended a test on site.

Both manufacturing and testing are carried out according UNE 41957/1:2000

1. Anchor for light cladding
2. Screw
3. Nylon sleeve
4. Adhesive mortar
5. Wall
6. Cladding